



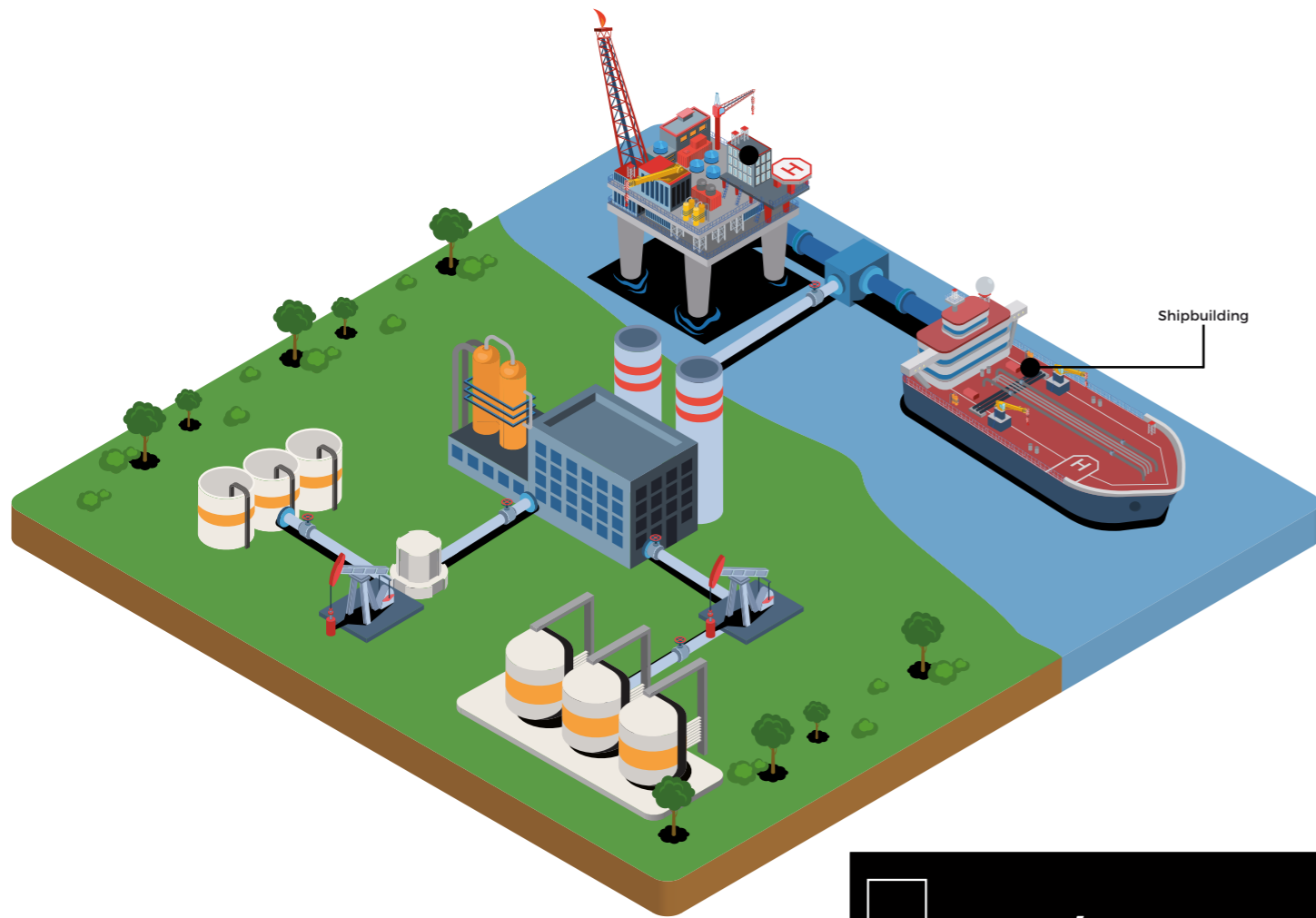
BE basor
ELECTRIC

SHIPBUILDING
SOLUTIONS

Shipbuilding

Shipbuilding is the expression of the Naval Engineering and it involves the construction, reparation and renewing of ships or all kind of floating vessels. This industry is normally located at coastal areas called shipyards. The shipbuilding industry deals with the production of larger vessels intended for the merchant fleet (cargo or passenger transport), the off-shore energy industry or military purposes. This sector needs products for their electrical installations such as cable trays with the best quality, most advanced safety and the largest durability.

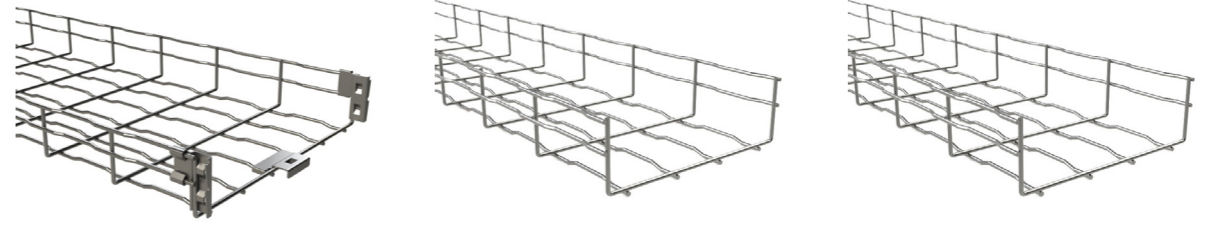
Construcción naval es como se conoce coloquialmente a la Ingeniería Naval y esto significa la construcción, reparación y renovación de los barcos o de todo tipo de embarcaciones flotantes. Normalmente esta industria está localizada en zonas costeras denominadas astilleros. La industria de la construcción naval gestiona la producción de grandes embarcaciones para el transporte (de mercancías o pasajeros), la refinería de crudo o el sector militar. Estos campos de fabricación demandan productos para las instalaciones eléctricas con la mejor calidad, la seguridad más avanzada y una larga duración.



Legend/Leyenda

- Width /Ancho
- Length /Largo
- Raw Material /Materia prima
- CMS Cable Management System /Sistema de bandeja portacable
CMS with electric continuity /SBP con continuidad eléctrica
CMS insulating /SBP aislante
- High /Alto
- Safe Working Load /Carga de trabajo admisible

Wire Mesh/Hilo



model /BF2R

60 - 600 mm 65/105

3000 mm SWL LOW

Electrozincated

CMS with electric continuity



model /BFR

60 - 600 mm 35/65/105

3000 mm SWL LOW

Stainless steel 304L

CMS with electric continuity



model /BFR

60 - 600 mm 35/65/105

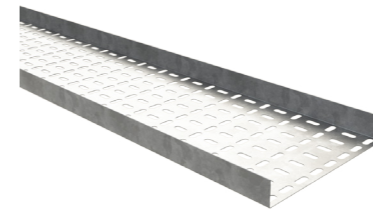
3000 mm SWL LOW

Stainless steel 316L

CMS with electric continuity



Cable Trays/Bandeja Portacable



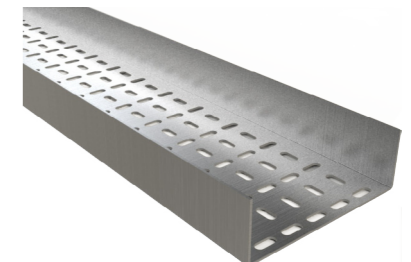
model /EB

50 - 600 mm 15/30/50

2000 - 3000 mm SWL HIGH

Pre-Galvanized

CMS with electric continuity



model /U

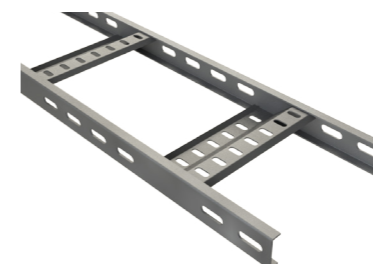
50 - 600 mm 15/30/50

2000 - 3000 mm SWL HIGH

Hot Dip Galvanized

CMS with electric continuity

Cable Ladder/Escaleras



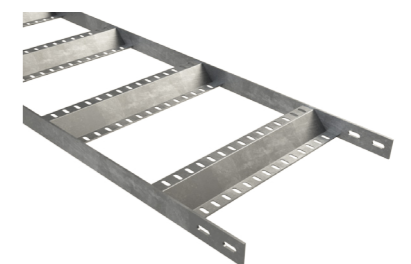
model /EML

100 - 600 mm 40

2000 mm SWL MEDIUM

Hot Dip Galvanized

CMS with electric continuity



model /EMS

100 - 600 mm 40

2000 mm SWL MEDIUM

Hot Dip Galvanized

CMS with electric continuity



BASOR ELECTRIC S.A Headquarters

Avenida Alcodar 45-47
46701 Gandia SPAIN

+34 962876695
basor@basor.com
www.basor.com

